

The Newsletter of Simulation

Simul8 2010 Launched

Key new Features announced for Simul8 2010 include;

'Carbon Footprint Calculator' allowing you to monitor the carbon output of your processes in Co2e. Reports can be created with a breakdown of emissions, offsets and total environmental impact. This feature is in the Standard and Professional versions.

Writing code has never been easier with the new Visual Logic Command Builder. A browser now sits alongside each Visual Logic code window with commands organised into categories plus your 'Favourites' and 'Recents'. Once you have found the command you are looking for, simply drag and drop it into your Visual Logic code. This feature is only available in Professional.

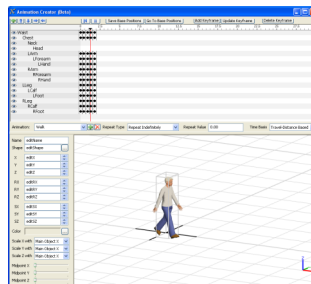
Agent Based Simulation has arrived in SIMUL8 2010! Visual Logic can be attached to Work Items so that they can control their own behaviour and determine their own interactions with the rest of the model. This feature is only available in Professional.

Simio at Wintersim 2009

Dennis Pegdens long awaited simulation product "Simio" had its first Wintersim airing. As a result Saker got its first one-to-one with Dennis and a chance to review the tool firsthand. Dennis gave us a detailed walkthrough of the product, highlighting some of its new features. Whilst not short of bells and whistles, such as direct access to download Google Sketchup images and a Ribbon based interface, the promised leap forward in simulation technology is difficult to quantify. For organisations new to simulation it may offer a more familiar Microsoft structure than many of its peers. However, the ability to create real simulations is no easier than the current crop of tools. Interestingly, we felt the tool still has not defined its real market strengths. Against a material handling or complex manual operation application, Automod and Flexsim functionality would still dominate. For higher level models or continuous applications Simul8 would still offer a better and more cost effective solution. Its still early days and we will watch developments with interest.

Flexsim 5 Announced

Flexsim Software Products Inc have announced the latest version of their leading simulation software, Flexsim 5. The new version has radically overhauled the licensing mechanism to remove the need for hardware security devices. The release is aimed at improving ease of use and enhancing the graphical capability of the software. The incorporation of an animation creator takes the graphical ability to a new level, allowing users to animate objects even when created in external graphics packages. For the seriously advanced user there is also better access to the event list and the software now incorporates its own code profiler.



Earlier Newsletters

Missed any of our earlier newsletters? Feel free to either download them from our website or contact us and we will be delighted to send them out to you. Each newsletter has a selection of Hints & Tips with various updates covering everything from new releases of simulation software to our move to new offices at Ragley.

To remove your name from our mailing list, please [click here](#).

Questions or comments? E-mail us at imagine@sakersolutions.com or call +44 1789 762255

Newsletter Spotlight

Saker at SW10

Saker will once again will be sponsoring the Simulation Workshop. SW10 organized by the OR society is the major UK simulation conference. Let us know if you are interested in attending

WinterSim 2010

Will be held in Baltimore in December 2010. Saker will again be attending so please let us know if you plan to attend.

Forthcoming Training

Flexsim

Stage 1 Basic

12th Apr – 16th Apr
10th May – 15th May
7th Jun – 11th Jun
5th Jul – 9th Jul

Stage 2 Advanced

19th Apr – 23rd Apr
17th May – 21st May
14th Jun – 18th Jun
12th Jul – 16th Jul

Stage 3 Graphics

4th May – 7th May
26th Jul – 29th Jul

Simul8

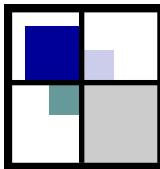
26th Apr – 29th Apr
21st Jun – 24nd Jun
19th Jul – 22th Jul

Anylogic

12th Apr – 15th Apr
7th Jun – 10th Jun
8th Dec – 11th Dec

Product News

SakerGrid the new distributed simulation platform is being shown at SW10. Following a Research and Development program with Brunel University Saker have produced a platform which allows users to easily achieve substantial improvements in the time taken to run scenarios. To get more information contact Saker at grid@sakersolutions.com



The Newsletter of Simulation

Case Study

GNL Chile is using a Flexsim simulation model and gas planning application, built by Saker Solutions, to evaluate and mitigate risks whilst leveraging value released by seizing opportunities in a supply chain where the equipment costs exceed 1.2 billion dollars and where the monthly charges and inventory value run into many millions of dollars. The simulation based application has now become a key part of GNL Chile's operations



Hints & Tips

Flexsim Tip #1

Frames

Frames can be used on any object within Flexsim to alter any shape or give the impression of movement. Multiple .wrl or .3ds files must be created for each object that you want to use with the frames functionality. Each frame you create for the file must have the same name as the base object, but be appended with FrameX, where X is the frame number. For example: movingProcessor.wrl, movingProcessor-Frame1.wrl, movingProcessorFrame2.wrl...

The setframe(current),x) command can now be used on the object to change its visual appearance at different stages of the model run. When frames are cycled through objects can appear animated (N.B. This is how the Flexsim operator walks).

Flexsim Tip #2

Keyboard Shortcuts

Here are some useful Keyboard Shortcuts for use within Flexsim

- Run/Pause the model: Ctrl + Space
- Reset the model: Ctrl + Left Arrow Key
- Step through the model: Ctrl + Right Arrow Key
- Double the current model run speed: Ctrl + Up Arrow Key
- Halve the current model run speed: Ctrl + Down Arrow Key.

Simul8 Tip #1

Panning across the screen

The following shortcuts can be used to pan around the screen in Simul8:

- Pan Left to Right: Shift + Scroll mouse wheel
- Pan Up and Down: Ctrl + Scroll mouse wheel.

Simul8 Tip #2

Want to execute Visual Logic and open spreadsheets effortlessly and dynamically? A great way to do this is to create on screen buttons which when pressed execute On Button Click Visual Logic. This in turn can CALL other Visual Logic commands as well as opening any of your spreadsheets using the 'Set main sheet' and 'Display main sheet' commands.

Witness Tip #1

Witness does not have an entry point to execute actions on reset to time zero, the user needs to use actions on initialize which only execute when the model is actually run. However, if you create a function containing the desired code and use this function as the machine priority then this WILL be evaluated before the model starts. This is not documented functionality but has been used on various models without issue.

Disclaimer

We make every effort to ensure the accuracy of the Hints and tips in this document along with other information published in this newsletter. However Saker does not warrant the accuracy of such information. If you have any feedback on this newsletter please do not hesitate to contact us.

To remove your name from our mailing list, please [click here](#).

Questions or comments? E-mail us at imagine@sakersolutions.com or call +44 1789 762255